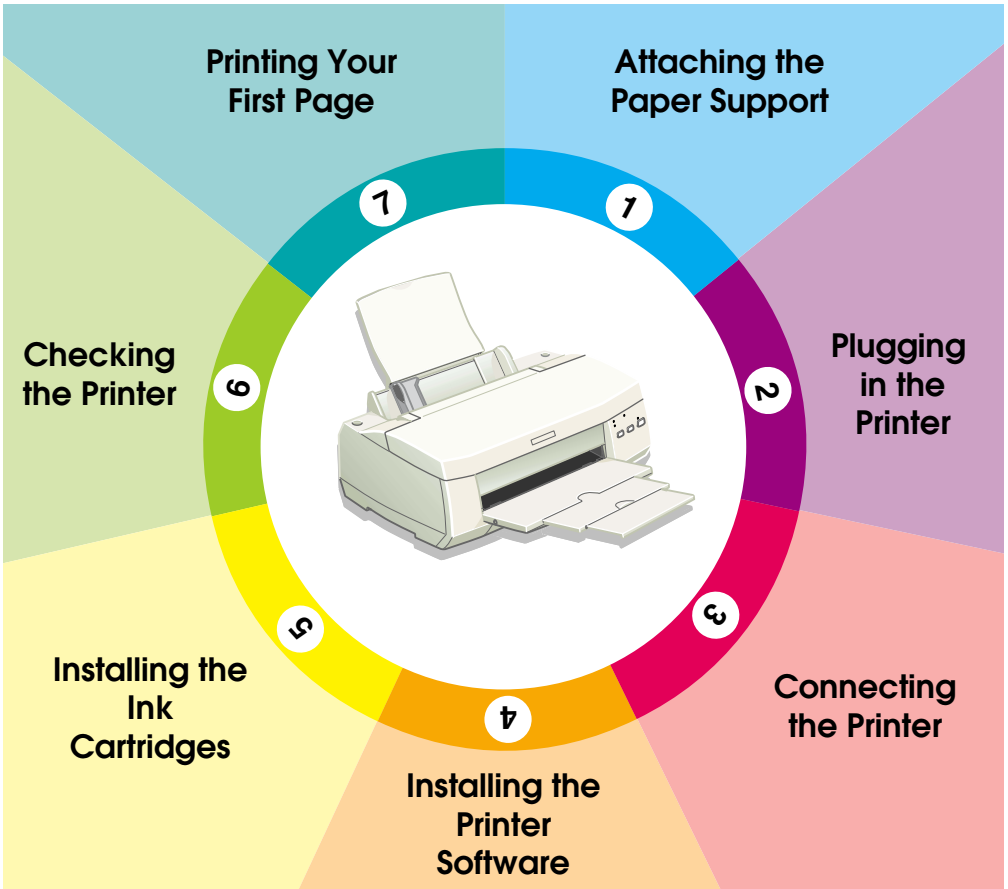


EPSON

Color Ink Jet Printer

EPSON STYLUS™ COLOR 980

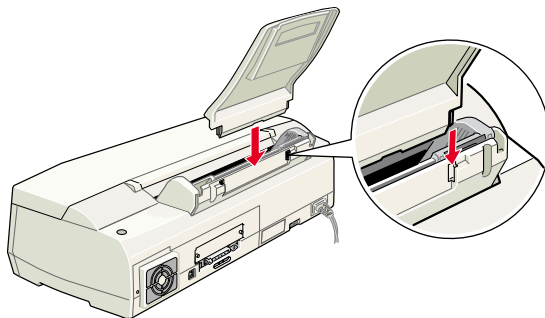


Setup Guide

1

Attaching the Paper Support


Insert the paper support into the slots at the rear of the printer.



2

Plugging in the Printer

Follow the steps below to plug in the printer.

1. Make sure that the printer is turned off. It is off when the  power light is off.
2. Check the label on the back of the printer to make sure that the voltage required by the printer matches that of the electrical outlet that you will be plugging it into. Also, make sure that you have the correct power cable for your power source.



Caution:

It is not possible to change the printer's voltage. If the rated voltage and your outlet voltage do not match, contact your dealer for assistance. Do not plug in the power cord.

3. If the power cord is not attached to the printer, connect it to the AC inlet on the back of the printer.
4. Plug the power cord into a properly grounded electrical outlet.

Connecting the Printer

If you have a PC, it is possible to connect to your printer using either the parallel or the USB interface. A Macintosh can only be connected via the USB interface. Depending on your geographic location, you may need to acquire the appropriate cable. See “Options and Consumable Products” in the *Daily Use* guide for details.

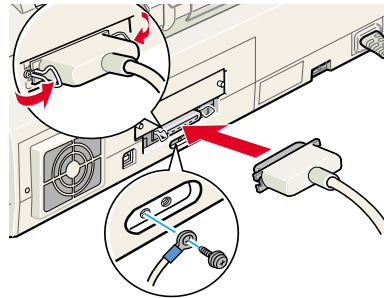
Note:

In order to connect your PC via the USB interface, your computer must be a Windows 98 or Windows 2000 pre-installed model that is equipped with a USB port.

Using the parallel interface for PCs

To connect the printer to your PC, you need a shielded, twisted-pair parallel cable. Follow the steps below.

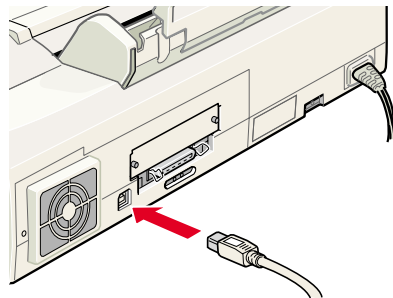
1. Make sure that both the printer and the computer are turned off.
2. Plug the cable connector securely into the printer's interface connector, then squeeze the wire clips together until they lock into place on both sides. If your cable has a ground wire, connect it to the ground connector below the interface connector.
3. Plug the other end of the cable into the computer's parallel interface. If there is a ground wire at the computer end of the cable, connect it to the ground connector at the back of the computer.



Using the USB interface for Windows and Macintosh users

To connect the printer to a USB port, you need a standard, shielded USB cable. Follow the steps below.

1. Make sure that both the printer and the computer are turned off.
2. Plug the appropriate end of the cable into the USB port at the back of the printer. (The shape of the end that fits the printer differs from that of the end that fits the computer.)
3. Connect the other end of the cable to the computer's USB port.



4

Installing the Printer Software

After connecting the printer to your computer, you must install the software that is included on the “Printer Software for EPSON Stylus COLOR 980” CD-ROM shipped with your printer.

Your printer software CD-ROM includes the following:

Printer driver and utilities

The printer driver runs, or “drives,” your printer; use it to make settings such as print quality, speed, media type, and paper size. The Nozzle Check, Head Cleaning, and Print Head Alignment utilities help you to keep your printer in top operating condition. EPSON Status Monitor 3 (for Windows 98, 95, 2000, and NT 4.0) or EPSON StatusMonitor (for Macintosh) notifies you of printer errors and displays printer status information, such as the amount of ink remaining. The Status Monitor also guides you through the ink replacement process.

Online guides

The online *Reference Guide* and the *Color Guide* help you to learn more about your printer and color printing.

If you are using the floppy disk version of the software, make a backup copy of the EPSON printer software disk before you begin installation. If you wish to make a floppy disk version of the printer software, you can use the driver disk creation utility that is included on the CD-ROM.

Follow the instructions in the appropriate section below to install the printer software. If you are DOS user, see “Printing with DOS” in the *Daily Use guide*.

For Windows 98, 95, 2000, and NT 4.0 users


Windows 98, 95, 2000, and NT 4.0 users must first install the printer software, and then, if you are connecting via the USB port, check to ensure that the USB cable is correctly installed. If you are connecting via the parallel port, proceed to section [5](#) after installing the software.

Note:

- When using Windows 2000, if you do not follow the steps below to install the printer software, Microsoft’s Universal driver may be installed instead. To see if the Universal driver has been installed, right click anywhere in the printer driver window and then click About in the list that appears. If a screen containing the words Unidrv Printer Driver is displayed, follow the steps below to reinstall the printer driver.*
- If the Digital Signature Not Found dialog box appears during the installation process, click Yes. If you click No, you must reinstall the printer software as described below.*


Installing the software

Follow the steps below to install the printer software.

1. Make sure that your printer is off.
2. Turn on your computer and start Windows. If the New Hardware Found screen or any other Wizard appears, click Cancel.
3. Insert the printer software CD that is shipped with your printer in the CD-ROM drive. The Installer dialog box opens. (For floppy disk users, insert the disk in the disk drive and double-click the My Computer icon, the floppy disk drive icon, and then Setup.exe.)
4. Select Install Printer Driver/Utility and click . Then, click OK in the dialog box that appears to start the printer software installation



Note:

It is possible to install the Reference Guide on your hard drive from the Installer dialog box, as shown at the right. To install the guide, select Online Guide and then click . Then, click Install Reference Guide and follow the on-screen instructions. When the installation is complete, an ESC980 Guide icon appears in the EPSON folder. Double-click the icon to open the guide.

5. Follow the on-screen instructions to turn on your printer.

For Windows 98 users, the printer port configuration starts automatically. For printers connected via USB cable, the USB device driver installation starts automatically at this point. A message will appear asking you to restart your computer. Follow this instruction.

6. After turning on the printer, the Setup utility opens automatically. Follow the on-screen instructions to install the ink cartridges, check the print head nozzles, and clean the print head. When a message appears informing you that the setup is complete, click OK.



Note:

If the Setup utility does not start, proceed to section [5](#) to install the ink cartridge using the printer's control panel.

7. When a message appears informing you that the installation is complete, click OK.

Note:

If an error message appears, either the printer driver or the EPSON USB printer device driver is not installed correctly. See “Troubleshooting” in the Daily Use guide for details.

After the setup is complete, proceed to section **7** to print your first page.

Ensuring that the USB driver is installed correctly

After installing the software, USB users should follow the directions below to confirm that the USB driver is installed correctly.

Note:

The illustrations used in this section show the procedure for Windows 98.

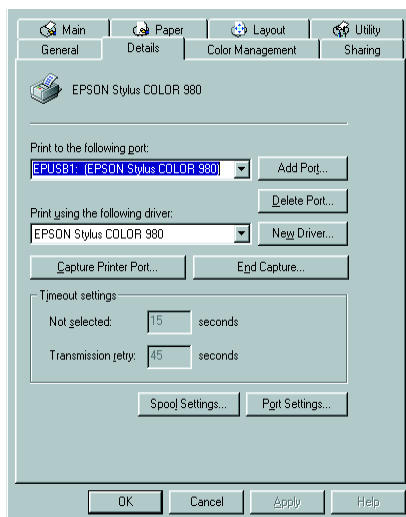
1. Click the Start button, point to Settings, and then click Printers. Make sure that the icon for your printer is displayed in the Printers window.
2. Select the icon for your printer, then click Properties on the File menu.



3. For Windows 98 users, click the Details tab and make sure that EPUSBx: (EPSON Stylus COLOR 980) is displayed in the Print to the following port list box. For Windows 2000 users, click the Ports tab and make sure that USBxxx, EPSON Stylus COLOR 980 is displayed in the Print to the following port(s) list box.

Note:

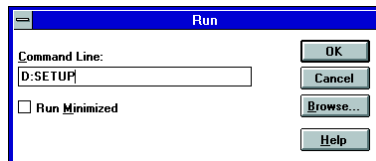
If the correct port is not displayed, refer to the “Troubleshooting” section of the Daily Use guide or the Online Guide.



For Windows 3.1 users

Follow the steps below to install the software in Windows 3.1.

1. Make sure that Windows 3.1 is running and the Program Manager window is open.
2. Insert the printer software CD that is shipped with your printer in the CD-ROM drive. (If you use the floppy disk version, insert the disk in the disk drive.)
3. Click Run on the File menu. The Run dialog box appears. In the Command Line text box, type D:\SETUP and click OK. The installation program copies the printer software files.



Note:

If the CD-ROM drive is assigned a drive letter other than "D" or if you are using the floppy disk version of the software, substitute the appropriate letter.

4. When the installation is complete, click OK to exit the installation program.

The installation program automatically selects this printer as the default printer for Windows applications.

For information on accessing and using the software, see "Using the Printer Software for Windows" in the *Daily Use* guide.

For Macintosh users

Macintosh users must first install the printer software, and then select the printer in the Chooser.



Caution:

Turn off all virus protection programs before installing the printer software.

Installing the software

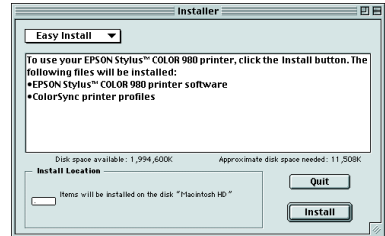
Follow the steps below to install the printer software.

1. Turn on your Macintosh and insert the software CD in the CD-ROM drive. The contents of the EPSON printer software CD are displayed.
2. If a single Installer icon is displayed, double-click the icon. If separate folders containing installer icons for several languages are displayed, double-click the folder for your preferred language, then double-click the Installer icon inside it.

Note:

It is possible to install the Reference Guide on your hard drive from the printer software CD-ROM. To install the guide, click Install Reference Guide and follow the on-screen instructions. When the installation is complete, a View Reference Guide icon appears in the EPSON folder. Double-click the icon to open the guide.

3. In the initial dialog box, click Continue. The Installer dialog box opens.

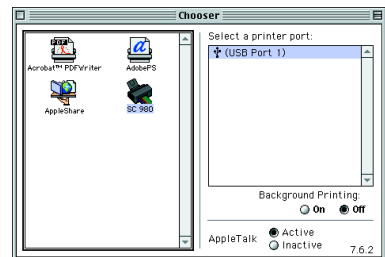


4. Make sure that the Install Location box displays the correct drive to install to, then click Install.
5. When a message appears informing you that the installation is complete, click Restart to restart your computer.

Selecting your printer in the Chooser

After you have installed the printer software on your Macintosh, you must open the Chooser and select your printer. You need to select a printer the first time you use it or whenever you want to switch to another printer. Your Macintosh will always print using the last printer selected.

1. Choose Chooser from the Apple menu. Then click your printer's icon and the port that your printer is connected to.



2. Select the appropriate Background Printing radio button to turn background printing on or off.

When background printing is on, you can use your Macintosh while it is preparing a document for printing. In order to use the EPSON Monitor3 utility to manage print jobs, background printing must be turned on.

3. Close the Chooser.

5

Installing the Ink Cartridges

Windows 98, 95, 2000, and NT 4.0 users can use the Setup utility to install ink cartridges. Windows 3.1 and Macintosh users must use the printer's control panel. Refer to the appropriate section below.

Using the Setup utility

If you have Windows 98, 95, 2000, or NT 4.0 installed on your computer, the Setup utility will open automatically when the printer software installation is complete. Follow the on-screen instructions.

Using the printer's control panel

If you can not access the Setup utility, use the printer's control panel to install the ink cartridges.



Warning:

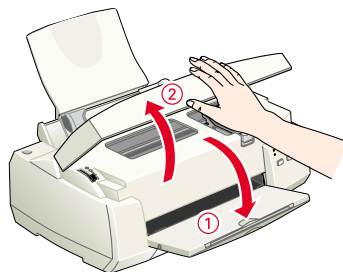
The ink cartridges are self-contained units. Under ordinary use, ink will not leak from a cartridge. If ink does get on your hands, wash them thoroughly with soap and water. If ink gets into your eyes, flush them immediately with water.


Note:

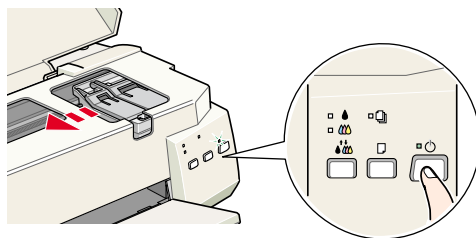
Do not open the ink cartridge packages until just before you install them; otherwise, the ink may dry up.




Install the ink cartridges as described below.

1. Lower the output tray and then open the printer cover.



2. Press the  power button to turn on the printer.

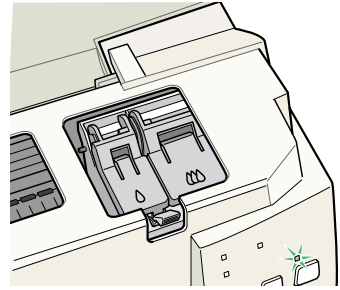


The print head moves left to the ink cartridge installation position. The  power light flashes and the  and  ink out lights come on.

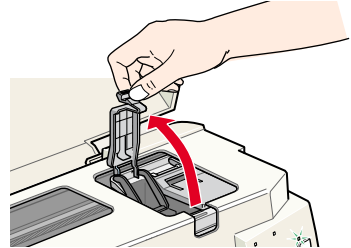


Caution:

Do not move the print head by hand; doing so may damage the printer.



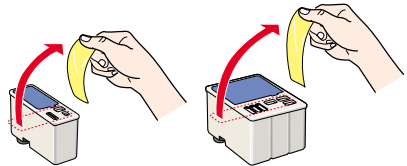
3. Lift up the ink cartridge clamps.



Note:

Do not remove the small sponges that are attached to the ink cartridge clamps.

4. Open the ink cartridge packages and remove only the yellow tape seals from each cartridge.



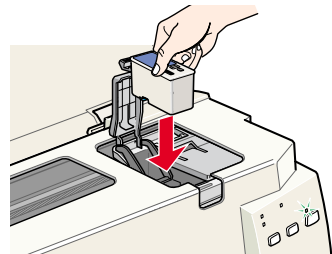
Caution:

- You must remove the yellow tape seals from the cartridges before installing them; otherwise, a fatal error will occur and the cartridges will become unusable.
- Do not remove the blue portion of the tape seals from the cartridges; otherwise, the cartridges may become clogged and unable to print.
- Do not remove the tape seals from the bottom of the cartridges; otherwise, ink will leak.

5. Place the black ink cartridge gently into its holder with the labels facing up. Do not press down on the cartridges.

Note:

Install both ink cartridges. If either of the cartridges is not installed, the printer will not work.

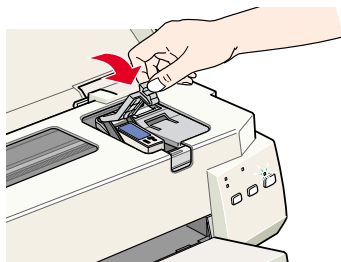



6. Lower the ink cartridge clamps until they lock in place.

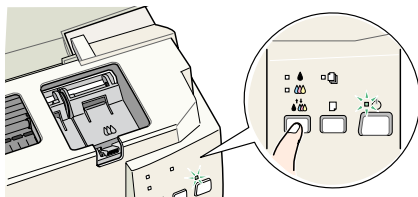


Caution:

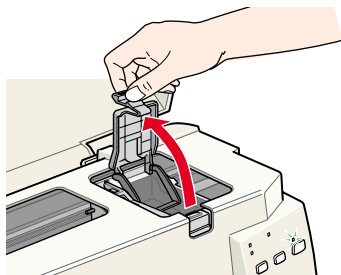
Once you install the ink cartridges, do not open their clamps again until you replace the ink cartridges; otherwise, the cartridges may become unusable.




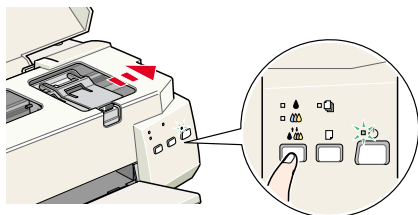
7. Press the  cleaning button to install the color ink cartridge. The printer moves the print head to the color ink cartridge installation position.



8. Lift up the ink cartridge clamp. Install the color ink cartridge as described in steps 5 and 6, substituting "color ink cartridge" for "black ink cartridge" where appropriate. Then go to step 9 to complete the ink cartridge installation.





9. Press the  cleaning button. The printer moves the print head and begins charging the ink delivery system.



Caution:

Always press the  cleaning button to move the print head. Do not move the print head by hand. Doing so may damage the printer.

While the ink is charging, the  power light flashes and the printer produces a variety of mechanical sounds. These sounds are normal. When the ink delivery system has been charged, the print head returns to its home (far right) position and the  power light comes on.



Caution:

Never turn off the printer while the  power light is flashing.

10. Close the printer cover.

6

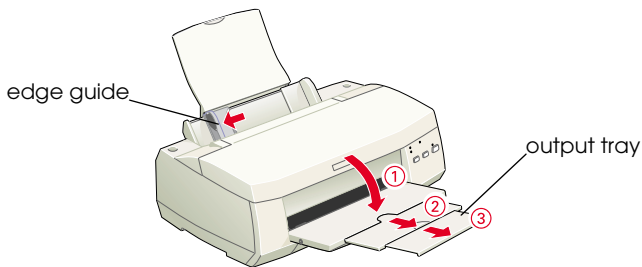
Checking the Printer

Before printing your first page, load plain paper in the printer and print a nozzle check page to make sure that the printer is working correctly. If the nozzle check is unsatisfactory, you may need to clean the print head.

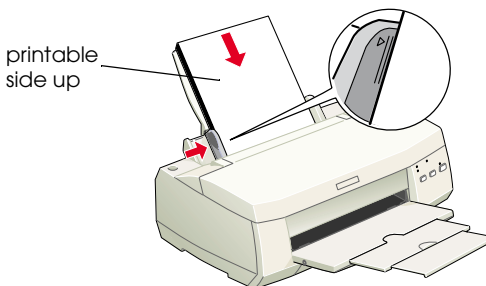
Loading paper

Follow the steps below to load plain paper in the printer.

1. Lower the output tray and slide out the extension, then slide the left edge guide so that the distance between the edge guides is slightly wider than the width of your paper.





2. Fan a stack of paper, then tap it on a flat surface to even the edges.
3. Load the stack of paper in the sheet feeder with the printable side up and the right edge of the paper resting against the right edge guide. Then slide the left edge guide against the left edge of the paper.

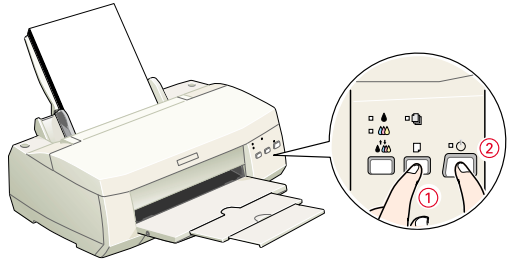


Note:

- ❑ Always load paper into the sheet feeder short edge first.
- ❑ Make sure that the paper stack fits under the arrow mark on the inside of the edge guide.

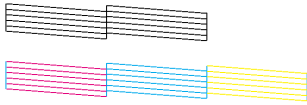
Checking the print head nozzles

Make sure that the printer is turned off. Hold down the  load/eject button (① in the illustration) and press the  power button (② in the illustration) to turn on the printer. Then release both buttons.

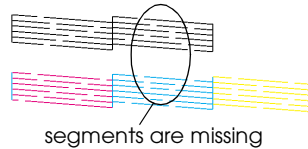


Here are sample printouts.

Good Sample







Print head Needs to be cleaned.




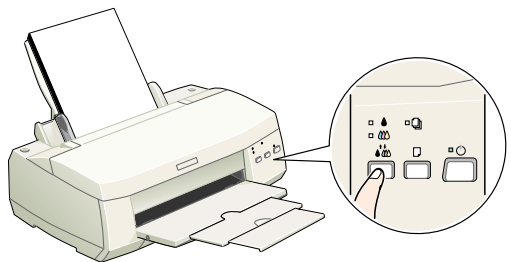
If the nozzle check page does not print satisfactorily (for example, if any segment of the printed lines is missing), then you should clean the print head as described below. If the printout is satisfactory, you are ready to print your first page. See “Printing Your First Page” for instructions.

Cleaning the print head

Follow the steps below to clean the print head.


1. Make sure that the  power light is on and that both the  black and  color ink out lights are off.
2. Hold down the  cleaning button for three seconds.

The printer starts cleaning the print head and the  power light begins flashing. Print head cleaning takes about thirty seconds to complete.



Caution:

Never turn off the printer while the  power light is flashing. Doing so may damage the printer.

3. When the  power light stops flashing, print a nozzle check pattern to confirm that the head is clean and to reset the cleaning cycle.

If print quality hasn't improved after repeating the nozzle checking and cleaning procedures four or five times, contact your dealer.

After making sure that your printer is operating correctly, you are ready to print your first page. To familiarize yourself with the printer software, we recommend that you print one of the sample files provided with your printer software. To print a sample file, follow the instructions for Windows or Macintosh in this section.


If you choose to print your own document instead, load the appropriate paper in the printer, open the document in your application, then proceed to step 4 in the relevant section below, making changes where appropriate.

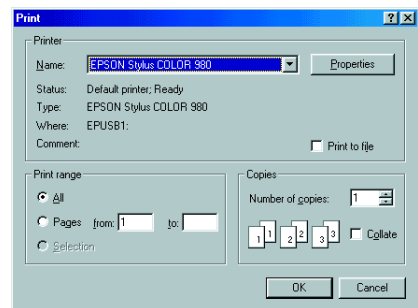
Note:

- ❑ See your software manual for details on how to use an application.
- ❑ Depending on the type of document that you are printing and the type of paper that you are using, you may have to make settings that differ from those described in this section.

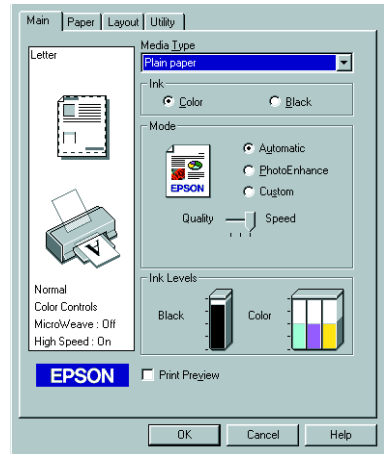
For Windows users

Follow the steps below to print the sample file.

1. Make sure that A4 or Letter size EPSON Photo Quality Ink Jet Paper is loaded in the printer.
2. Insert the printer software CD in the CD-ROM drive. If the Installer dialog box appears, click  Quit.
3. Double-click the My Computer icon. Right-click the CD-ROM icon and click Open. Then double-click the sample.bmp file to open it.
4. To change the printer driver settings, click Print on the File menu. A Print dialog box similar to the one on the right opens. (This example is from Paint).
5. Select your printer in the Name list box, then click Properties. The printer driver opens



- Click the Main tab, then select Photo Quality Ink Jet Paper in the Media Type list box.



- Select Color as the Ink setting.
- Select Automatic as the Mode setting. When Automatic is selected, the printer software optimizes other settings according to the Media Type and Ink settings that you make.
- Click the Paper tab, then click anywhere in the Paper Size list box and select the paper size that is loaded in the printer.
- Click OK at the bottom of the printer driver window. You return to the Print dialog box (or a similar dialog box).
- Click Close, Print, or OK to print. You may need to click a combination of these buttons.

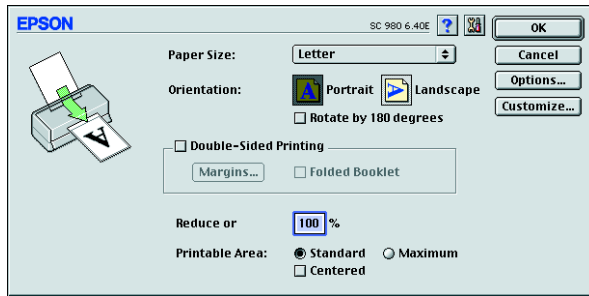
While printing is in progress, the EPSON Progress Meter (for Windows 98, 95, 2000, and NT 4.0) or the EPSON Despooler dialog box (for Windows 3.1) is displayed, showing the printing progress and the status of your printer.


For Macintosh users

Follow the steps below to print the sample file.

- Make sure that A4 or Letter size paper is loaded in the printer.
- Insert the printer software CD in the CD-ROM drive.
- Open the EPSON folder and double-click the README file.

- Click Page Setup on the File menu. The following dialog box appears.

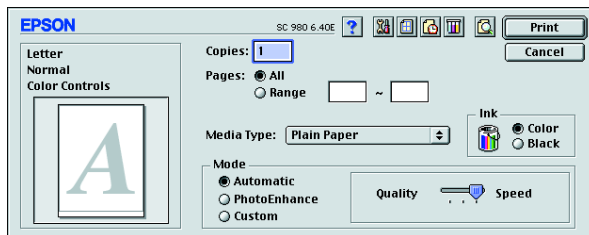


- Select the paper size that is loaded in the printer from the Paper Size list box.
- Select  Portrait as the Orientation setting.
- After making your settings, click OK to close the Page Setup dialog box.

Note:

You cannot print from the Page Setup dialog box. You can only print from the Print dialog box.

- Click Print on the File menu. The Print dialog box opens.



- Select Plain Paper from the Media Type list.
- Select Color as the Ink option.
- Select Automatic as the Mode setting. When Automatic is selected, the printer software optimizes other settings according to the Media Type and Ink settings that you make.
- Click Print to start printing.